

User Instructions

Upholstery Pro

Model F436-P

The Upholstery Pro cleaning tool provides deep, rapid penetration of cleaning solution and simultaneous high volume extraction. Lightweight, easy to use, and adjustable for a wide range of fabrics and soiling conditions, the Upholstery Pro produces cleaner, drier fabrics.

Patents: <http://www.LBpatents.com>

READ AND SAVE THESE INSTRUCTIONS

KEY FEATURES

- Comfortable handle and highly flexible vacuum hose provides relaxed balanced handling and substantially reduces operator fatigue.
- In-line solution strainer helps prevent clogging.
- High pressure injector glide provides deep, even penetration of solution into fabric surface.
- Unique dual extraction slots permit full extraction in both directions across fabric surfaces
- Sliding vacuum release allows for precise vacuum control on delicate fabrics.
- Clear housing for easy monitoring of water flow, fabric or carpet dryness, and cleaning effectiveness,

USING THE UPHOLSTERY PRO

1. Connect the rear quick-connect solution line to the extractor solution line
2. Attach the rear hose coupling to the extractor vacuum port.
3. Turn on extractor.
4. Squeeze the trigger lever to release the solution and begin cleaning. The sliding trigger lock may be used to hold the trigger valve in the open position.
5. Use the **vacuum release slide** (Fig. A) to adjust the

strength of the vacuum as needed.



WARNING: Quick-connect coupling can become extremely hot during use.

Tips for Use

Vacuum control. Use the vacuum release slide (Fig. A) to control the strength of the vacuum when extracting thin, delicate or lightweight fabrics.

For best results, use the Upholstery Pro with VersaClean cleaning chemicals.

For more information about cleaning with the Upholstery Tool, visit www.sapphirescientific.com.

MAINTENANCE

Daily: Rinse the hand tool by running clean water through the solution line.

Daily: Check the glide assembly (Fig. A) for steady, even flow of solution through the injector nozzles. If any of the injector ports appear clogged, use a small needle to remove the obstruction, taking care not to damage the glide. If the glide is scratched, gouged, snags on carpets, or flows excessively, it may need to be replaced (see "Servicing the glide," below). Replacement glide assemblies are available from your distributor.

As needed: Lubricate the quick-connect couplings (Fig. A) with a small amount of rust-inhibiting oil such as LPS-3.

As needed: Lubricate trigger valve stem (Fig. C) with a small amount of synthetic heavy duty grease. To grease the stem, follow these steps.

1. Remove the trigger lever nut and bolt from the trigger lever and remove lever.
2. Unscrew stem retention nut and lift out stem assembly. Apply a small amount of grease to the stem.

FIG. A: HEAD, VACUUM HOSE AND SOLUTION LINE ASSEMBLY

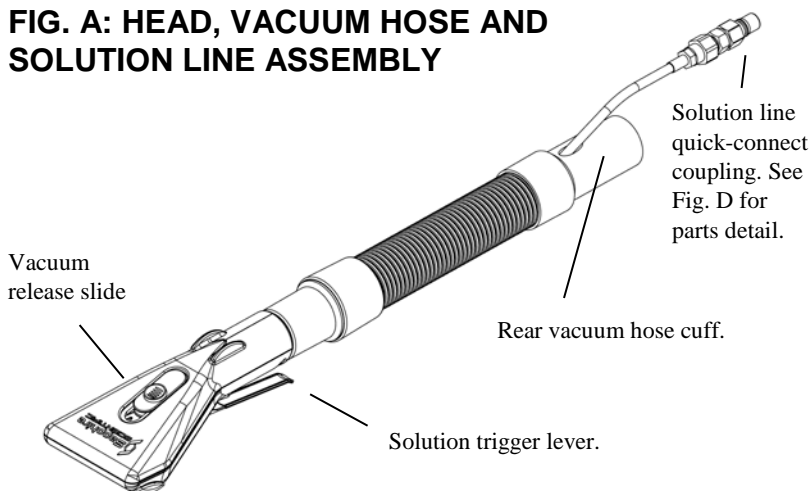
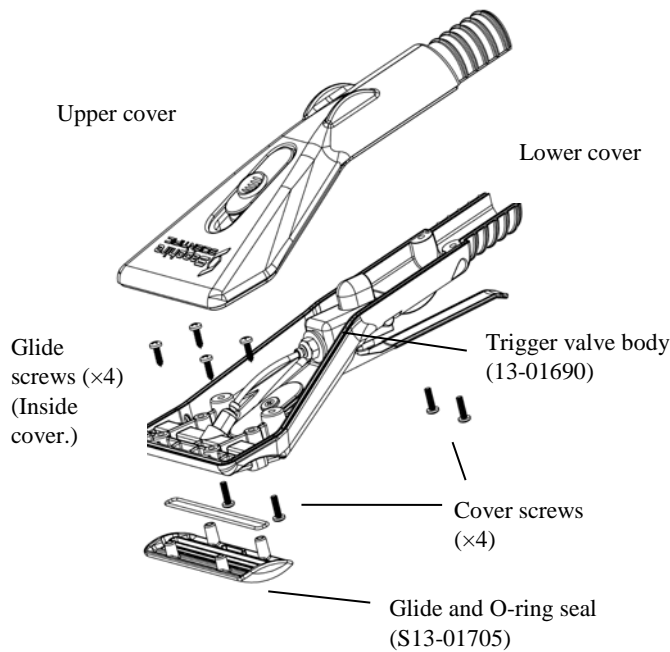


FIG. B: HEAD ASSEMBLY



3. Replace stem assembly and retighten retention nut. Reattach trigger lever.

As needed: Clean the inline strainer (Fig. D) when solution flow is visibly reduced. To clean the filter, loosen the strainer assembly nut, and remove the strainer and strainer washer. Rinse these items in clean water and reassemble the strainer. It is not usually necessary to replace the inline filter element. Be sure to include the nylon washer when reassembling, and take care not to over-tighten the strainer assembly nut.

To maintain appearance, wipe exterior surfaces with a damp cloth.

SERVICING

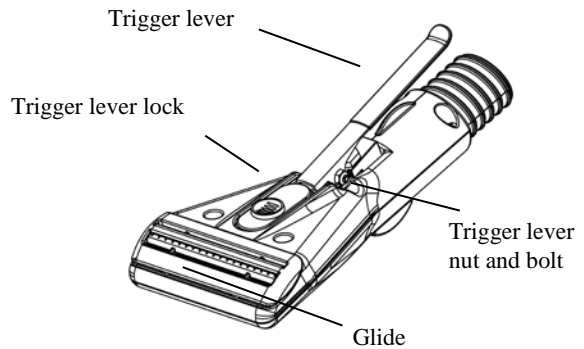
The Upholstery Pro is designed to allow easy in-the-field service to the glide and the trigger valve with basic hand tools in just a few minutes. If replacement becomes necessary, rebuild kits and replacement parts are available from your Sapphire distributor or from Sapphire Scientific at 800-932-3030.

Replacing the glide

Have on hand a Glide and O-ring replacement kit (part no. S13-01705).

1. Remove the four cover screws (Fig. B) and lift off the cover.
2. Remove the four glide screws (Fig. B) and remove the glide and the O-ring seal. Discard.
3. Install new O-ring into sealing edge of new glide. Put new glide into head. Make sure that the O-ring is in place.

FIG. C: HEAD (BOTTOM VIEW)



4. Replace glide screws and tighten; then replace cover and tighten with cover screws.

Servicing the trigger valve

If the trigger leaks or no longer releases sufficient solution and you have determined that the glide is not plugged or damaged (see “Check Glide Assembly,” p. 1) the trigger may need service. Two repair options are available.

Option A: Rebuild the trigger valve.

A stem replacement kit (part no. 48-064) is available from your Sapphire distributor. The parts included in this kit are shown in Fig. D.

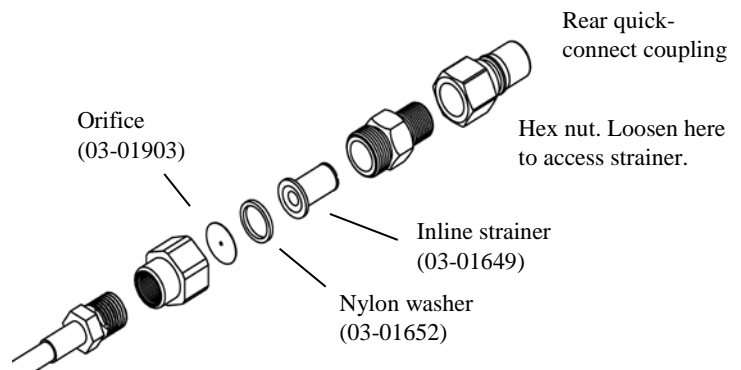
1. Remove the nut and bolt from the trigger lever and remove the lever.
2. Unscrew stem retention nut and lift out stem assembly.
3. Install the stem assembly and retighten the stem retention nut.
4. Replace cover and reinstall trigger lever. Use the new lock nut provided (Fig. D).

Option B: Replace the trigger valve assembly

A replacement trigger valve assembly (part no. 13-01690) is available from your Sapphire distributor.

1. Remove the four cover screws (Fig. B) and lift off the cover.
2. Depress the hose release ring on the solution outlet tube and pull out the tube. Avoid kinking the tube.

FIG. D: SOLUTION LINE COUPLING ASSEMBLY



3. Remove the solution outlet tube fitting from the valve body.
4. Disconnect the solution inlet hose assembly from the valve body.
5. Valve body and trigger will now drop free.
6. Insert new trigger valve assembly and reinstall solution outlet tube and solution inlet hose assembly.
7. Replace cover.

REPLACEMENT PARTS

The following replacement parts are available from your Sapphire Scientific distributor:

Description	Drawing reference	Replacement part no.
Trigger and valve body	Fig. B	13-01690
Glide and O-ring seal	Fig. B	S13-01705
Strainer	Fig. D	03-01649
Orifice	Fig. D	03-01903
Nylon washer	Fig. D	03-01652

SPECIFICATIONS

Model	Sapphire Scientific Upholstery Pro F436-P Part no. 67-019 67-019-P
Dimensions	Head: 4 in. extraction width Hose assembly: 10 ft.
Construction	Head: High performance nylon resin. Glide: Engineering thermoplastic Hose assembly: High-flex vacuum hose Fittings: Brass with high-temp seals
<i>Specifications are subject to change without notice. Some values may be approximate.</i>	

WARRANTY

Warranty information is available from your Sapphire Distributor or at www.sapphirescientific.com.

Warranty registration

Visit www.SapphireScientific.com to register your purchase. Registration allows us to better assist you with using, maintaining or servicing your equipment, as well as to contact you in case we have important safety information concerning your Sapphire Scientific product. If you determine service is required, have your equipment model, serial number and original proof of purchase available and call your distributor for assistance with obtaining a return material authorization (RMA).

CONTACT

Sapphire Scientific
2604 Liberator
Prescott, AZ 86301
800-932-3030 www.sapphirescientific.com